

CAP The Future of Infrared Windows

Who Says IR Windows Have To Be Round?

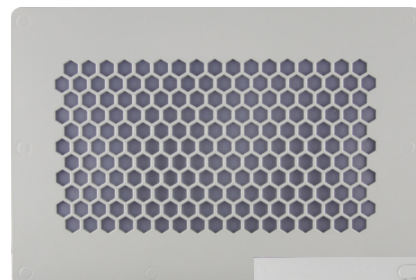
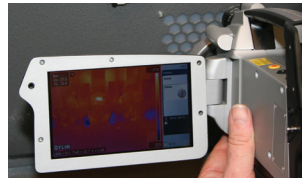
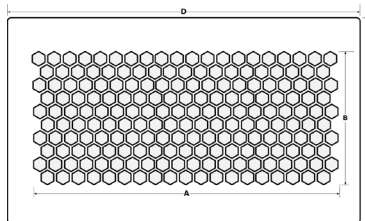
In the past, round, infrared (IR) window lenses were made from crystals in 2, 3, and 4 inch diameters. Larger sizes were not possible because the crystals would become too fragile. The “modulus of rupture” states that increasing the crystal diameter whilst maintaining the same thickness increases its fragility exponentially.

Our innovations in the materials used in the IRISS VPFR series, “The World’s Only Industrial-Grade Infrared Window”, combined with the inherent durability and transmission stability are the cornerstone of the IRISS CAP range of products. Today, because of the stability of design and transmission, IRISS is producing and engineering IR windows that are customized to the application - rather than trying to manage the application to the limitations of the size or shape of the IR windows readily available for use. The IRISS CAP series of IR windows now come in standard widths of 6, 12 and 24 inches and allow for more freedom to inspect multiple components through one infrared window, thus reducing the number of IR windows, their installation time and associated costs.

At IRISS, your safety and compliance with regulations and standards is always at the forefront of our research and development. The IRISS CAP series of IR windows offers innovation - creating products that are simply “safer by design”.



IRISS CAP series shown here with the VPFR share the same patented lens solution



CAP-12 Shown



CAP-C-12 Shown Open

Specifications

Materials	
Panel and reinforcing grill	Specified to suit customer requirements
Optic	UL 746C certified, IR transmissive polymer; -40°C (-40°F) to 325°C (617°F)

Dimensions

Model	Visual Window	IR Window	Overall Dimensions
CAP-6	NA	A=3.6, B=5.9	C=6.3, D=8.6
CAP-12	NA	A=9.3, B=5.0	C=12.0, D=8.1
CAP-24	NA	A=21.2, B=5.9	C=24.0, D=8.6

Model	Visual Window	IR Window	Overall Dimensions
CAP-C-6	NA	A=3.6, B=5.9	C=6.3, D=8.6
CAP-C-12	NA	A=9.3, B=5.0	C=12.0, D=8.1
CAP-C-24	NA	A=21.2, B=5.9	C=24.0, D=8.6

CAP The Future of Infrared Windows

The World's First Impact Resistant Infrared and Visual Inspection Window

When you require a visual inspection at the same time as your IR inspection, the IRISS CAP-V series is the window of choice. There are a number of tests that must be completed before an infrared window can comply with the mandatory requirements of IEEE C37 20.2.a.3.6 and UL746C.

The IRISS CAP series is designed to comply with these standards. IRISS incorporates the same impact resistant, clear polycarbonate lens found in all major brands of switchgear. This ensures that the CAP-V meets these mandatory impact, load and flammability requirements. (Industrial standards that NO crystal or non-reinforced polymer IR window can meet.)

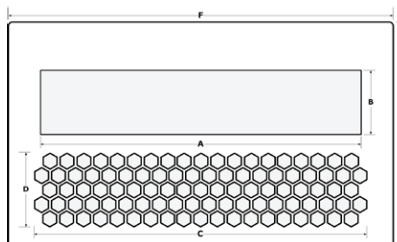


CAP-VCH-12 Installed

Include Covers for Added Durability and Protection

The IRISS CAP-VC series offers the ability to specify locking protective covers for your IR Window. These are especially useful in areas of high traffic and protect the IR and visual viewing panes from impact, flying debris and dust. Standard hinged covers offer locking capabilities, protect the IR viewing panes and are available in the entire CAP series. The customization available in the IRISS CAP series, allows two protective cover options:

- CAP-VC range to offer a protective cover for the IR viewing pane only
- CAP-VCH range offers a protective cover for both the IR and visual viewing pane with a single door



Dimensions

Model	Visual Window	IR Window	Overall Dimensions
CAP-V-6	A=3.8, B=1.95	C=3.6, D=2.3	E=6.3, F=8.6
CAP-V-12	A=9.4, B=1.95	C=9.3, D=2.3	E=12.0, F=8.1
CAP-V-24	A=21.3, B=1.95	C=21.2, D=2.3	E=24.0, F=8.6

Model	Visual Window	IR Window	Overall Dimensions
CAP-VC-6	A=3.8, B=1.94	C=3.6, D=2.3	E=6.3, F=8.6
CAP-VC-12	A=9.4, B=1.94	C=9.3, D=2.3	E=12.0, F=8.1
CAP-VC-24	A=21.3, B=1.95	C=21.2, D=2.3	E=24.0, F=8.6

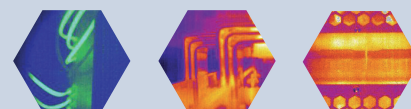
Model	Visual Window	IR Window	Overall Dimensions
CAP-VCH-6	A=3.8, B=1.94	C=3.6, D=2.3	E=6.3, F=8.6
CAP-VCH-12	A=9.4, B=1.94	C=9.3, D=2.3	E=12.0, F=8.1
CAP-VCH-24	A=21.3, B=1.95	C=21.2, D=2.3	E=24.0, F=8.6

Easily Monitor:

- UPS System
- Long rows of connections
- Multiple connections located close to panel cover
- Commutator Slippage
- Couplings under guards
- Mechanical systems behind poly carbonate or metal guards
- Just about anything else you can dream up

Features:

- Based on the patented design of the VPR Infrared Window
- Fully impact resistant infrared and visual optics
- Works with all IR Cameras
- IR Fusion Capable
- Stable transmission rate – Proven compatibility with acids, alkalis, UV, moisture, humidity, vibration and high frequency noise
- Reinforcing grills comply with IP2x standard for safe hole size for failsafe design
- Customizable, if you don't see what you need in the standard offering you can configure:
 - Housing Materials
 - Gaskets
 - Locking Devices
 - Labeling
 - Color
 - Etc....
- Versatile & rugged



For more information visit www.iriss.com or contact your local agent

IRISS
See What You've Been Missing!

www.iriss.com
E-mail: info@iriss.com
US Toll Free (877) 70 IRISS
International +1 (941) 907 9128

©2011 IRISS, Inc. All rights reserved. Prices and specifications subject to change without notice. Printed in U.S.A.