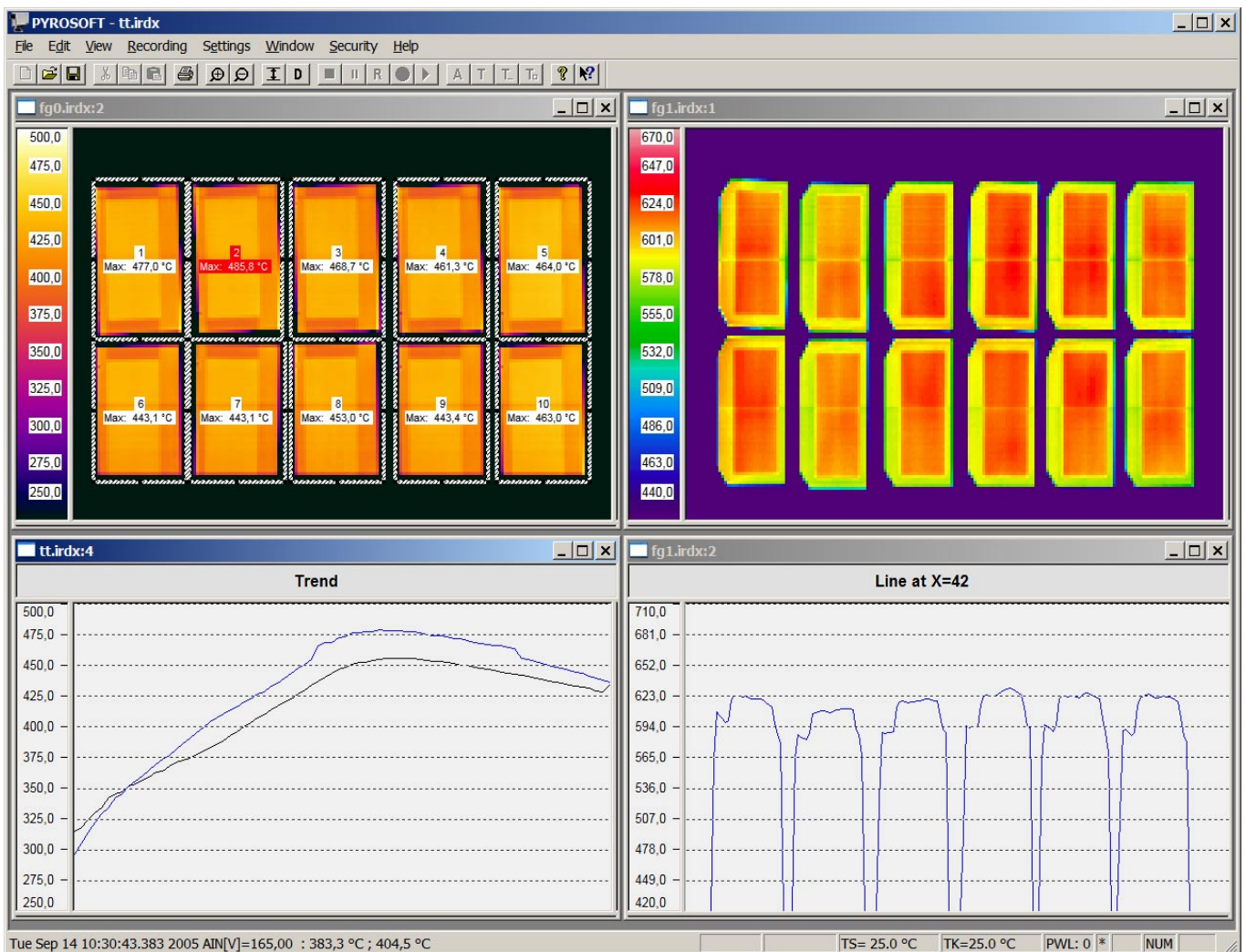


# PYROSOFT Basic/Control

All-purpose online and offline software for all infrared cameras from DIAS

All-purpose **online and offline software** for all infrared cameras from DIAS (PYROLINE, PYROVIEW, PYROINC, MIDAS) applicable under Windows® (2000, XP) with the following functionality:

- Online data acquisition from DIAS infrared cameras, multi camera operation possible
- Visualisation of measured temperature images and real-time data storage in DIAS-IRDX-file format
- Zone calculation with alarm limit value monitoring
- Comprehensive export functionality
- Optional communication interfaces for process control (RS232, DDE, digital and analog outputs, PROFIBUS)
- Multi document interface with different view windows per document
- Convenient sequence display and trend analysis
- Integrated multi level password protection
- Multi document interface with different view windows per document



A software integration package **PYROSOFT DAQ** is available alternatively with the following functionality:

- DLL-interface for direct data access on all DIAS infrared cameras
- DIAS-IRDX-file support
- Bitmap and display functions for color palettes and measured values

# PYROSOFT Basic/Control

All-purpose online and offline software for all infrared cameras from DIAS

	PYROSOFT Basic	PYROSOFT Control
<b>Online data acquisition from DIAS infrared cameras, multi camera operation possible</b>	×	×
Generation of re-usable document templates	×	×
Setting of all measurement parameters	×	×
Triggering of data acquisition with digital inputs on camera	×	×
Triggering of data acquisition with digital inputs on external IO-system		×
<b>Realtime data storage</b>	×	×
Monitoring of available disk space		×
<b>Online function check</b>	×	×
Toggle signal on digital output for monitoring of operation		×
<b>Zone definition and alarm value monitoring</b>	×	×
Online alarm state output with digital outputs on camera	×	×
Online alarm state output with digital outputs on PC card or external IO-system		×
Online measurement value output with analog outputs on PC card or external IO-system		×
Online alarm and measurement value output via PROFIBUS-DP PC card		×
<b>Opening and modifying of several documents</b>	×	×
<b>Three-dimensional display with automatic rotation</b>		×
<b>Display of measured sequences with data player</b>	×	×
Trend display online and offline		×
<b>Correction of Emissivity and Transmission</b>	×	×
Automatic emissivity and transmission correction with external reference measurement		×
<b>Text export to file</b>	×	×
Online text export to file		×
<b>Bitmap export to file or clipboard</b>	×	×
Online bitmap export to file		×
<b>Video export to file</b>		×
<b>Remote control and data export (ASCII) via RS232 or DDE interface</b>		×
<b>Online measurement of additional values (temperature, speed, voltage, ...) with storage into sequence</b>		×
<b>Password protection for all menus</b>		×

Technical details are subject to change without notice. January 2006.

